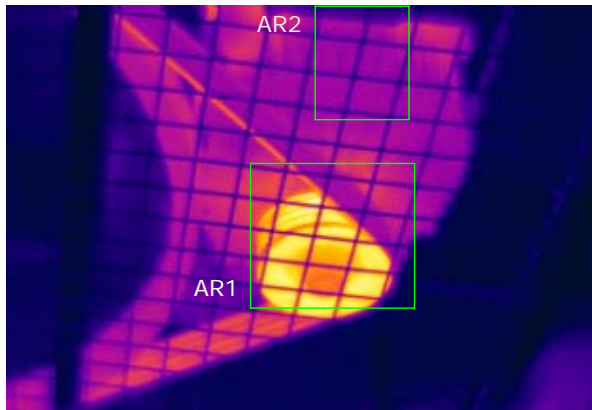


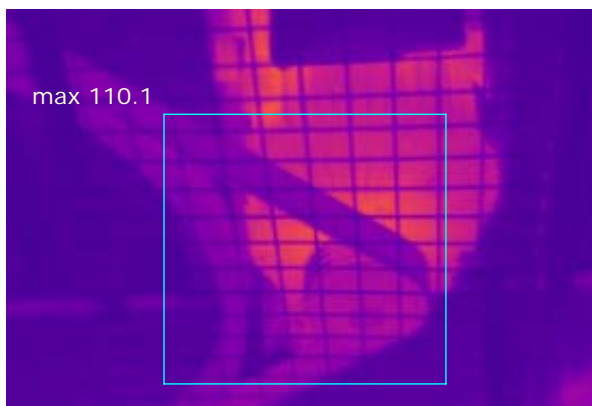


Prepared For: Sample Client
Facility : Power Gen Facility
Equipment: WSAC Exchanger Cooling Fan
Location: WSAC CCW SYSTEM

Component: WSAC FIN FAN COOLER
Description: 1H Motor Drive Sheave
View aspect: Direct
Severity: Moderate



COMPARATIVE NORMAL IMAGE:



GENERAL IMAGE INFORMATION

Table with 2 columns: Information (Image Date, Image Time, Image File name, Emissivity, Reflected Temperature, Defect Max. Temperature, Reference Max. Temperature, Defect vs. reference delta temp., Defect rise above ambient) and Values (February 20, 2016, 1:41:46 PM, A0729286.IMG, 0.95, 67.0 °F, 141.8 °F, 106.6 °F, 35.2 °F, 74.8 °F).

COMPONENT INFORMATION:

Table with 2 columns: Component Information (Manufacture - Model, Rated Voltage, Max rated temp C, Rated Load) and empty cells.

DEFECT SEVERITY INFORMATION

Table with 2 columns: Defect Severity Information (Percent Rated Load, Calculated temp 50% Load, Calculated temp 100% load) and empty cells.

Table with 4 columns: Voltage, Line 1 Amperage, Line 2 Amperage, Line 3 Amperage.

Comments: Excessive temperature on motor sheave.
Recommend: Perform vibration analysis on motor to determine source of problem. Not a typical loose belt signature as the belt temperature is not excessive.

Repaired by: _____ Date: _____